

FOR THOSE WHO DEMAND MORE. AXIAL-FLOW® 130-SERIES

CASE IH
AGRICULTURE



AFTER MORE THAN 160 YEARS WE STILL SHARE THE SAME VISION: FOR FARMING IN THE FUTURE, AGRICULTURAL MACHINERY MUST ALWAYS BE AN INNOVATIVE, RELIABLE AND PROFITABLE INVESTMENT.

160 years ago the first machines were born under the Case IH brand names, such as Case, International Harvester and David Brown. They very soon became legends, playing a major role in shaping the spirit of farming over the decades. The inventor of the power take-off, axial-flow threshing, hydraulic reversing gear and the pioneer of the continuously variable transmission, today the Case IH heritage continues and the first pioneers' vision of agriculture is still at the heart of every Case IH product. It is with the same passion that every day we continue to develop agricultural machinery in UK and across the world, with more than 100,000 Case IH machines in operation.

This wealth of experience has given us the opportunity to listen to you and design products that deliver precisely what you need. Our drive for innovation means we have been able to envisage advanced technological solutions that continue to give you machines with even higher performance and productivity, that are easy to use and more profitable. Our constant striving for quality enables us to achieve perfection down to the smallest detail. We demand the same high level of quality in the services that we provide to our customers; our network of 56 dealers, 29 dealer branches and sub-dealers and 85 Case IH service centres in Europe is your guarantee of personalised and professional service. This is how we like to work to gain the trust of our customers.

CASE IH: FOR THOSE WHO DEMAND MORE

MORE THAN THREE DECADES OF ROTOR HARVESTING HERITAGE.

Over the past 30 years Case IH has optimized the single in-line rotor design to ensure our machines excel in capacity, performance and efficiency. The success of your business is measured by the price you earn for your crop. Whatever the challenges of the growing season you only have a single opportunity to get the crop from the field to market in perfect condition. No other combine does that as effectively as the Axial-Flow®.

THE CASE IH BRAND	2-3
AXIAL-FLOW 130 CONCEPT	4-5
HEADERS	6-7
SINGLE ROTOR TECHNOLOGY	8-9
RESIDUE MANAGEMENT	10-11
OPERATOR ENVIRONMENT	12-13
ENGINE & DRIVELINES	14
SERVICEABILITY	15
ADVANCED FARMING SYSTEMS	16-17
SYSTEMS APPROACH	18
SPECIFICATIONS	19

TAKING PERFORMANCE TO A NEW LEVEL.

The new Axial-Flow 5130, 6130 and 7130 combines are built to meet the demands of today's mid-sized arable operations, from professional farms to progressive estates. At their heart is the proven principle of Axial-Flow single rotor technology and the benefits that it brings: thorough threshing, leading to lower losses, but with the gentlest of grain handling.





But, of course, things move on apace - technology, environmental considerations, crop yields, fuel prices... that's why Case IH engineers have enhanced almost every aspect of the latest Axial-Flow machines, to make the new 130 series more efficient, more effective, and more capable. All this, without compromising on its uncomplicated design to maintain high availability during the peak harvest and keeping costs at bay.

PERFORMANCE AT IT'S BEST...

The new Axial-Flow 130 series combines are a match for anything on the market when it comes to sheer output. With up to 415hp on tap and grain tanks that hold as much as 10,570 litres, capacity isn't an issue. These are machines designed to put tonnes in the trailer as fast as possible - in all crops and all conditions, but not at the expense of grain or straw quality. Gentle threshing and quality bedding straw are hallmarks of the latest Axial-Flow rotors.

...BUT NOT AT ALL COSTS

Case IH engineers understand that, whilst getting grain in the barn is the key to maximising income, fuel is one of farmers' biggest outlays, and that covering the ground quickly means nothing if it comes at the expense of higher diesel consumption or increased grain losses. At the heart of the new Axial-Flow series are engine, transmission and rotor refinements designed to extract all power possible from every last drop of diesel and ensure long-lasting reliability of every component. According to independent sources, Axial-Flow combines have up to 35% lower service and maintenance costs*) compared to competition. Case IH is constantly seeking to reduce the impact of its machines on your wallet and on the environment.

EASY OPERATION

Axial-Flow combines have long been renowned for their simplicity. Whilst our machines and the technology they incorporate have come a long way over the past three-and-a-half decades, helping owners become more productive in the process, one thing that hasn't changed is this commitment to simple, successful principles – in operation, in servicing and in the management of the machine.

A RICH TRADITION

Single rotor combines were pioneered by Axial-Flow engineers. We have thirty-four years of experience behind us and our belief in the single rotor principle for both threshing and separation is borne out in our dedication to design. However, that means nothing without the backing of the thousands of farmers who have bought Axial-Flow combines every year since their introduction. This brochure will tell you why we think Axial-Flow is the way to go, but nearly 145,000 satisfied customers tell you a whole lot more.

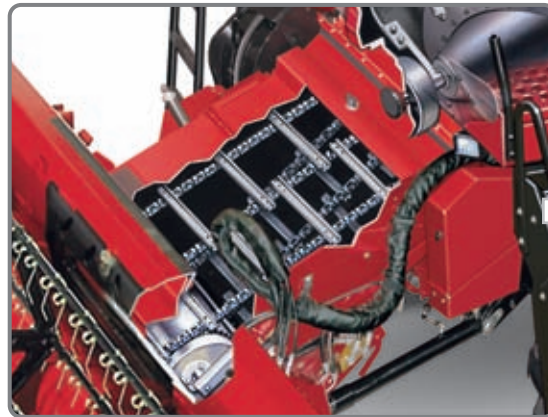
*) Comparison study of Georg-August-University Göttingen in DLG Mitteilungen 06/2011

AXIAL-FLOW HEADERS. DESIGNED TO GATHER EVERY GRAIN.

Latest generation Case IH headers, available in widths up to 7.6m, are designed specifically for European conditions and allow you to make the most of the capacity these combines are capable of. Choose from 3050 VariCut or 2000 series grain headers, or 6 and 8 row maize headers. VariCut allows the combine knife position to be moved “on the go” through a 50 to 57cm range for work in long and short straw conditions.



There are just two couplers for hydraulic and electrical header connections, keeping attachment/detachment time to a minimum. Automatic header recognition eliminates any need for set-up time when changing headers, while the standard Terrain Tracker system keeps the header parallel to the ground, even at high ground speeds.



But headers are only half the story when it comes to getting crop into the combine. The Axial-Flow 130 series features high capacity feeders to improve the flow of cut crop as it enters the machine, and that's just the beginning when it comes to improving throughput...



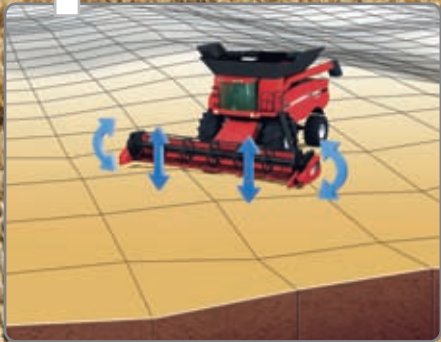
EXPERT PERFORMANCE IN MAIZE.

These hydraulically folding headers have been specifically designed for Axial-Flow® with strong shaft drivelines to ensure reliability. Cobs are precision picked and handled gently whilst the industry leading stalk chopper completes a perfect job. A consistent short chop length and even spreading of chopped material leaves a clean field behind.

PERFECT GROUND HUGGING.

The Terrain Tracker header control system keeps the header parallel to the ground in undulating conditions.

Electrical or hydraulic rape seed knives are available to operate in all rape seed conditions.



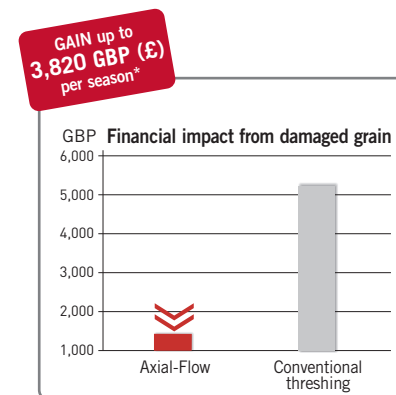
AXIAL-FLOW ROTOR – THE HEART OF THE PROCESS.

At the heart of Case IH 130 series combines is the latest Small Tube rotor, developed to boost throughputs and further improve threshing performance without compromising grain and straw quality, in dry and wet conditions, regardless of the crop being harvested. However, it's not just the rotor that makes the Axial-Flow different; the Cross Flow cleaning system which follows the separation process uses chevron-shaped volute fins to create a uniform vortex along its axis, generating high volumes of air throughput. Unlike conventional systems, there are no air pockets created – distribution is consistent across the underside of the sieves and fan speed is fully adjustable to cater for finer-seeded crops.



The grain-on-grain threshing action ensures that **what goes in the grain tank is unbruised and unbroken**, retaining the high quality crop-grade and less grain losses in the field, adding revenue to your bottom line. There's no high-impact conventional drum as used in conventional or hybrid combines, and the transition from threshing to separation is completely seamless. High centrifugal forces are achieved at low rotor

speeds, but for tougher conditions it's simple to increase the rotor velocity. Rasp bars are arranged in four spirals around the rotor for improved threshing, straw quality, and reduced power consumption. Access to the rotor cage is possible from the side of the machine, enabling concaves and separation grates to be removed and changed for different crops.



* Based on 500 ha operation. Axial-Flow assuming 0.5% grain damage, whereas conventional threshing assuming 2% grain damage measured in grain tank.

LESS GRAIN LOSS, MORE MONEY IN YOUR POCKET.

With a total separation area of 2.8 square metres and the centrifugal separating force generated by the rotation of the Axial-Flow® rotor, more of your harvest goes into the grain tank. As well as achieving the best possible quality grain, there is also more of it. **The result is evident from the amount you earn for your harvest.**



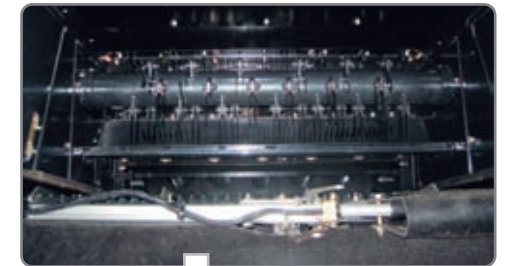
New Axial-Flow 130 series combines offer enormous **grain tank capacities of up to 10,570 litres**, keeping the need to unload to a minimum.

And with increased **unloading rates of 113 litres/sec**, grain is transferred to trailers in as little time as possible.



FINE CHOP? A PERFECT SWATH?

With a Case IH Axial-Flow, it's your choice. A 77-blade straw chopper pulverises straw and evenly discharges it into the stubble across the full width of cut. Disengage it, and you're presented with neat swaths of straw that put to rest any notion that straw from rotary combines can't be baled.



It's a common perception that the combine – and the stubble it leaves behind – is the first step to creating the ideal seed bed for establishment of the following crop. With an Axial-Flow, the combination of precision cut at the front and **precision chop at the rear** results in the perfect start for the next cropping season – **no time wasted with blocked tillage equipment.**

KNIFE PROTECTION SYSTEM.

Flail knives are mounted in pairs.

**STRAW QUALITY
FOR BALING OPERATIONS.**

Profit even more with a
high quality straw harvest.



WELCOME TO YOUR HARVEST OFFICE.

Case IH understands the pressures faced by farmers at harvest. We know good labour is hard to find and that many businesses employ only the minimum of staff, whether by choice or necessity. So whoever is in the seat – the farm owner, a skilled operator or a temporary harvest team member – they need a machine that's easy to operate.



Case IH engineers have thought through every little detail as to how the operator interacts with the machine to ensure the Axial-Flow is as simple and comfortable as possible to operate. **The Multifunction Propulsion Control lever** places all the key functions of the Axial-Flow® combine in the palm of your hand. For full control, **the most commonly used commands are arranged in the best ergonomic position**, allowing easy management of all header functions and operation of the unloading auger. In addition, an emergency stop button is included to halt feeder, cutter bar and header auger. The AFS Pro 700 colour touch screen monitor includes video capability for reversing cameras.

A Case IH operator deserves a comfortable, user friendly working environment. Climb the easy-access, foldable steps to the spacious deck, and behind the cab door you'll find ample space and storage, with comfort enhanced by thoughtful details such as an air suspended seat, low noise levels and an unrestricted view. A handrail and slip resistant footrest make windscreen cleaning safe and quick - practicalities designed by experienced Case IH combine engineers.



NO LIMITATION ON YOUR WORKING DAY.

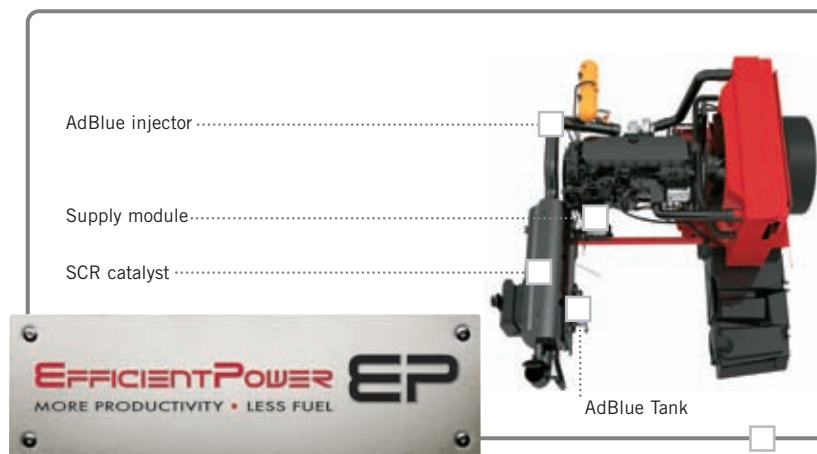
When the crop is ready and weather conditions are favourable the all-round lighting of Axial-Flow® allows you to continue harvesting safely and efficiently. Stadium lights are fitted to the roof to completely floodlight the work area. Lights in the grain tank, on the unloading auger and at the rear of the combine ensure all critical areas are fully illuminated. A high intensity discharge (HID) lighting package is also available.



NO SHORTAGE OF POWER.

New generation Case IH Axial-Flow combines use the latest Euro 3B (interim Tier 4A) emissions-compliant engines, but being cleaner doesn't mean being down on power or thirsty on fuel. In addition to removing nitrous oxides and particulates from exhaust gases without recycling them, compared to the previous combines, the selective catalytic reduction (SCR) and AdBlue technology used in these engines actually cuts the total fuel/AdBlue cost by up to 10%, depending on the model.

Whether in the field or on the road, Axial-Flow combines drive safely. Their long wheelbase and excellent weight distribution counteract the effect of bigger and heavier headers, making ballast weights redundant. Manoeuvrability in the field and on the road is excellent.



MAXIMIZING PRODUCTIVITY UNDER HEAVY ENGINE LOADS.

The Axial-Flow 5130 is powered by our 6.7 litre engine, whereas Axial-Flow 6130 and 7130 are powered by our 8.7 litre engine, also found in our Magnum tractors, and have powered Case IH Axial-Flow combines since 2006. The design combines optimum fuel efficiency with ease of service to handle the toughest farming conditions under heavy engine loads. In addition, as with other engines in Case IH tractors, it is Tier 4A compliant and features the Selective Catalytic Reduction system to meet more restrictive emission standards without sacrificing fuel economy or performance.

Case IH Selective Catalytic Reduction (SCR) technology. The SCR AdBlue technology used in these powerplants to meet Tier 4/Euro Stage 3B emissions legislation is tried and trusted, not only by the majority of farm machinery manufacturers, but also by the truck and earthmoving industry too. Improvements in emissions reduction technology mean these engines consume less fuel than their predecessors.

Hydrostatic transmission offers infinite control of ground speed, by using direct coupling from the engine to the hydrostatic pump for instant drive. Three speed ranges from the transmission allows you to select the right speed for crop and field conditions.

MAXIMUM RELIABILITY. MINIMUM SERVICE COSTS.

When there's a full day's harvest ahead of you, the last thing you want is a machine that's time-consuming to service. Daily checks and regular maintenance are simple when you run an Axial-Flow. With a design that's centred around fewer moving parts you can get going while others are still in the yard. Daily service points are easy to access via easy-to-raise side panels, anti-slip service steps, and the trademark spacious rear engine deck.



SPACIOUS ENGINE / COOLING SYSTEM DECK.

Sturdy ladder provides easy access to deck from rear of combine.

A neatly recessed ladder provides safe access to the engine platform and cooling group.



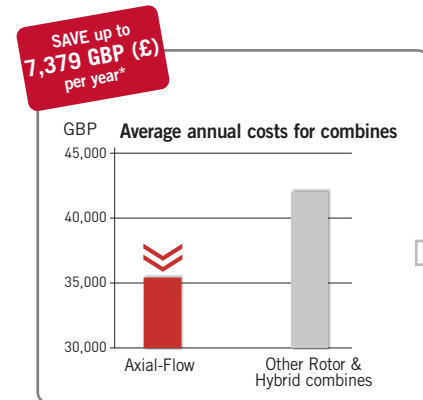
MAXIMUM UPTIME AND MINIMUM ROUTINE MAINTENANCE.

All combine adjustments and service points can be accessed from ground level or easily accessible steps.



MAXIMUM UPTIME AND MINIMUM ROUTINE MAINTENANCE.

Keeping you working, **reducing maintenance and costly downtime** is one of the ideas behind every Case IH Efficient Power EP Axial-Flow we build. These combines have less moving parts than other combines and, together with their quality engineering, operate at lower running costs than their main competitors.



EXTREME PRECISION. REALISE THE POTENTIAL OF YOUR CROPS.

Developments such as the wheel, the plough and the tractor have revolutionized agriculture. The Advanced Farming System AFS is the next progression and opens a new area of productivity; our contribution to your successful future. The new, optional Case IH AFS Pro 700 monitor uses touchscreen technology to bring every aspect of information about your combine and your harvest to your fingertips. Through it, you can operate satellite guided Accuguide systems, see yield maps, analyse field data and much more.

The AFS logo consists of the letters 'AFS' in a bold, black, sans-serif font. A small red dot is positioned above the letter 'A'. The logo is enclosed within a black, stylized oval shape that is open on the right side, resembling a swoosh or a partial orbit.

AFS

STRAIGHT, IDENTICAL, REPEATABLE.

They're words you'd expect an autoguidance system to deliver for you, and it does.

Eliminating guesswork of row spacing to ensure each one is identical, meaning fewer end-of-row turns and overlaps. Maintaining perfectly straight and repeatable rows with up to RTK accuracy.

Controlling traffic patterns and decreasing compaction, benefits that bring higher yields.

This adds up to less stress and fatigue for you at the end of the day, meaning you're **more relaxed and prepared for the next day's work.**



PRECISION COMPONENTS THAT MATCH THE WAY YOU FARM.

The AFS Pro 700 colour touchscreen monitor gives the operator real-time information on combine settings and in-field performance to enable instant judgements on machine settings. That data includes yield and moisture monitoring, as well as grain temperature.

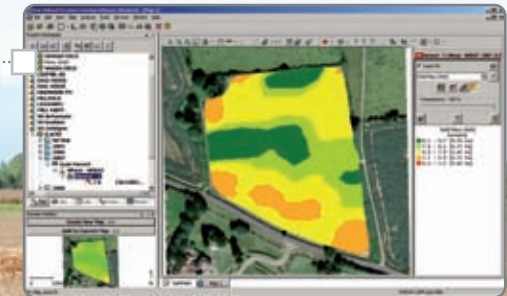
It also provides the ability to download operating info such as yield maps to aid with field husbandry decisions at a later date. In the farm office, data transferred from the AFS 700 Pro via a USB memory device can be used to analyse and aid field and crop management decisions out of season.



SOFTWARE THAT HELPS YOU ANALYZE PRODUCTION.

Farmworks, Agleader and Farmade can provide desktop software compatible with Axial-Flow's AFS system. Desktop software pulls together numerous sources of data about your farm and gives you the information you need to consider how things are changing. Layer yield and moisture maps over aerial photographs and compile additional useful information with precision farming help from third-party information providers.

Customize charts, graphs and layered maps for further analysis of variety/hybrid, plant population and soil topography. Compare dimensions and field-to-field yields from year to year. Autoguidance doesn't stop working for you once you get out of your combine!



THERE'S MORE THAN JUST OUR COMBINES WORKING IN YOUR FIELDS.

Case IH, professionals in your fields. Our dealers have the experience to help you manage your equipment to maximize yields and your bottom line. Parts and service technicians have the expertise to assist you before, during and after the sale, and CNH Capital will work with you to customize financing solutions to identify what works best for your needs and your farm. It's an integrated equipment, maximum service and financing system in one package, all of it focused on your operation.

KNOWLEDGEABLE DEALERS WHO WORK WITH YOU.

Your Case IH dealer understands you need an optimum return on your investment. That means fitting the right Axial-Flow combine and capabilities with the tools and implements that best fit your farm. Your dealer can recommend the appropriate options package, with proper headers for optimum performance, and **can analyze results with you, field by field.**

MAXIMUM SERVICE TO GET MAXIMUM UPTIME, SEASON AFTER SEASON.

Case IH offers Max Service, the first owners' support network in the industry, which **comes at no extra cost to you.** Max Service delivers manufacturer- direct assistance to you and your Case IH dealer. If you need service, parts or just have a question, Case IH staff will quickly respond to your unique situation. Your Case IH dealer already has a full line of parts and components, full-service maintenance programmes and industry-leading warranties. Max Service gives you even more resources to boost productivity with your Case IH equipment and minimize downtime. Your complete satisfaction is our goal so your dealer and Max Service are here for you whenever you need help by telephoning 00800 227344 00.

OFFERING FINANCING SOLUTIONS FOR MORE THAN 50 YEARS.

CNH Capital's extensive experience in the agricultural industry has created a deep understanding of your unique needs. **Competitive equipment financing with flexible payments can be timed to your cash flow.** Alternatively, conserve capital and reduce upfront payments with operating lease options. For other needs, choose from commercial revolving accounts specific to the agricultural industry. We can even help you protect your equipment investment with a wide variety of insurance and equipment protection products. There are financing options that fit the way you farm. CNH Capital helps you find them.



MODELS	AXIAL-FLOW® 5130	AXIAL-FLOW® 6130 Efficient Power EP	AXIAL-FLOW® 7130
HEADERS			
Grain header cutting width (m)	5,2 / 6,1 / 7,3	5,2 / 6,1 / 7,3 / 7,6	5,2 / 6,1 / 7,3 / 7,6
Knife to auger distance - 2040 / 2050 / 3050 Grain header (mm)	600 / 510-1010 / 510-1080 adjustable from cab		
Corn header model 2105 / 2106 / 2108 rigid and foldable	5 row & 6 row, chopping corn heads	5, 6 & 8 row chopping, corn heads	
THRESHING / SEPARATING			
Rotor speed range (rpm)	250 - 1,150 (3ranges)	250 - 1,150 (3ranges)	250 - 1,150 (3ranges)
Rotor diameter and length (mm)	762 / 2,794	762 / 2,794	762 / 2,794
Total separation area (m ²)	2.8	2.8	2.8
Threshing / separating modules wrap angle (°)	156 / 133	156 / 133	156 / 133
Number of threshing / separating modules	3 / 3	3 / 3	3 / 3
CLEANING SYSTEM			
3 steps cleaning system	●	●	●
Cleaning shoe width (mm)	1,470	1,470	1,470
Total sieve area under wind control (m ²)	5.52	5.52	5.52
CLEANING FAN			
Fan speed range (rpm)	450 to 1,300	450 to 1,300	450 to 1,300
RETURN SYSTEM			
Tailings return type	To rotor	To rotor	To rotor
GRAIN TANK / UNLOADING			
In-cab control of grain tank covers	●	●	●
Grain tank capacity (l)	8,800	10,570	10,570
Unloading rate (l/s)	88	113	113
Unloading auger effective length (m)	6.4	6.4	6.4
STRAW CHOPPER & SPREADER			
Number of knives - fine cut	76	76	76
Spreader type	twin 2-speed spreaders / detachable		
ENGINE *)			
Type / Capacity (cm ³)	Turbocharged, Intercooled / 6,700	Turbocharged, Intercooled / 8,700	Turbocharged, Intercooled / 8,700
Max. power ECE R120 ¹⁾ at 1,950rpm (kW/hp(cv))	220/299	285/387	305/415
Fuel tank, diesel/urea (l)	950 / 166	950 / 166	950 / 166
TRACTION			
Transmission	Hydrostatic drive, 3 speed ranges	Hydrostatic drive, 3 speed ranges	Hydrostatic drive, 3 speed ranges
Heavy Duty Adjustable steering axle	●	●	●
Powered rear axle	○	○	○
ADVANCED FARMING SYSTEMS (AFS)			
Yield & Moisture monitoring / mapping	○ / ○	○ / ○	○ / ○
AFS Precision Farming ready and Guidance ready	○	○	○
OVERALL MACHINE SPECS			
Length - feeder to rear trim panel (mm)	7,689	7,689	7,689
Wheel base (mm)	3,815	3,815	3,815
Minimum height (transport) (mm)	3,898	3,906	3,906
Width with 650/75R32 tyres fitted - min (mm)	3,300	3,300	3,300
Weight of basic machine (kg)	15,400	16,200	16,200
TYRE OPTIONS			
Front tyres	650/75R32 LI172 R1W / 800/65R32 LI172 R1W / 900/60R32 LI176 R1W		
Rear tyres	460/70R24 LI152A8 R4 / 480/70R30 LI152 R1W / 600/65R28 LI154A8 R1W		

● Standard ○ Optional at extra cost *) FPT-engine 1) ECE R120 correspond to ISO TR14396

! Safety never hurts! Always read the Operator's Manual before working with any equipment. Inspect equipment before using it, and be sure it is operating properly. Follow the product safety signs, and use any safety features provided.

This literature has been published for worldwide circulation. The standard and optional equipment and the availability of individual models may vary from one country to the next. Case IH reserves the right to undertake modifications without prior notice to the design and technical equipment at all times without this resulting in any obligation whatsoever to make such modifications to units already sold. Whilst every effort is made to ensure that the specifications, descriptions and illustrations in this brochure are correct at the time of going to press, these are also subject to change without prior notice. Illustrations may show optional equipment or may not show all standard equipment. Case IH recommends **AKCELA™** lubricants

CNH UK Ltd., Cranes Farm Road, Basildon, Essex SS14 3AD -© 2012 CASE IH - www.caseih.com - AXIAL-FLOW® 130-SERIES-UK-BR - Free phone 00800 22 73 44 00 - Printed in Italy - 01/12 - TP01 - Cod. 11C2003/INB

SPECIFICATIONS

